




Thanks to a renovation in 2001, the old N&W Passenger Station is now home to the Roanoke History Museum, the O. Winston Link Museum, and the Raymond Loewy Gallery.

The **Roanoke History Museum** collects, preserves, and exhibits items that demonstrate the Roanoke Valley's development from Virginia frontier to the railroad boomtown of Roanoke.

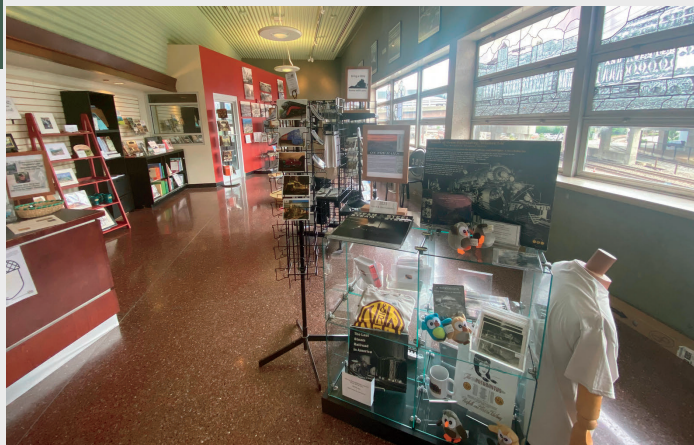
Through the art of Link's photographs, recordings, and film, the **O. Winston Link Museum** preserves a record of the last years of steam power on the Norfolk and Western Railway and the life it supported. Meet the people in the locomotive shops, on the trains, and along the lines in a 1950s world, which has now vanished from the landscape.

The **Raymond Loewy Gallery**, located in the main lobby of the building, offers a look at the work of a man considered the father of modern industrial design.

### Visitor Information

-  No food or drinks are permitted in the galleries.
-  Photography is only permitted in the Heritage and Trackside galleries.
-  Restrooms can be found in the museum off of the Trackside Gallery.

Don't forget to check out the beautiful stained glass windows in the gift shop, where you can also grab some souvenirs to remember your visit to the museum and Roanoke.



**Hours:**  
Tuesday-Saturday,  
10 a.m.-4:30 p.m.

**Closed:** Sunday &  
Monday

**Admission:**  
Adults: \$6  
Senior/Military/  
Educator/Student: \$5  
Children (12-17): \$3

Phone: 540-982-5465

Follow us on:



@owinstonlinkmuseum  
@vahistorymuseum

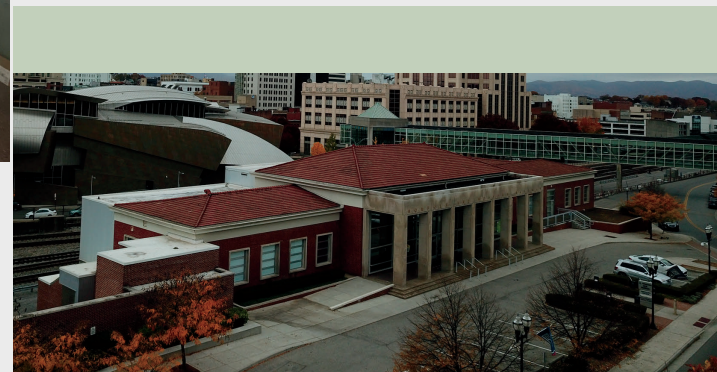


@owinstonlinkmuseum  
@HSWV1957



@historicalsocietyofwestern5688

# ROANOKE HISTORY & O. WINSTON LINK MUSEUMS



## Visitor's Guide Summer/Fall 2023

101 Shenandoah Ave. NE  
Roanoke, VA 24016  
[www.roanokehistory.org](http://www.roanokehistory.org)

# Welcome...

As you enter from the gift shop, you will pass through our Roanoke City history hall and the Norfolk Gallery. Take the stairs or the elevator to reach the main body of the Roanoke History and O. Winston Link Museums.

The 30-minute documentary, *What a Picture I Got!*, plays at the top of each hour in the G.E. Transportation Theater.

# Be sure to...

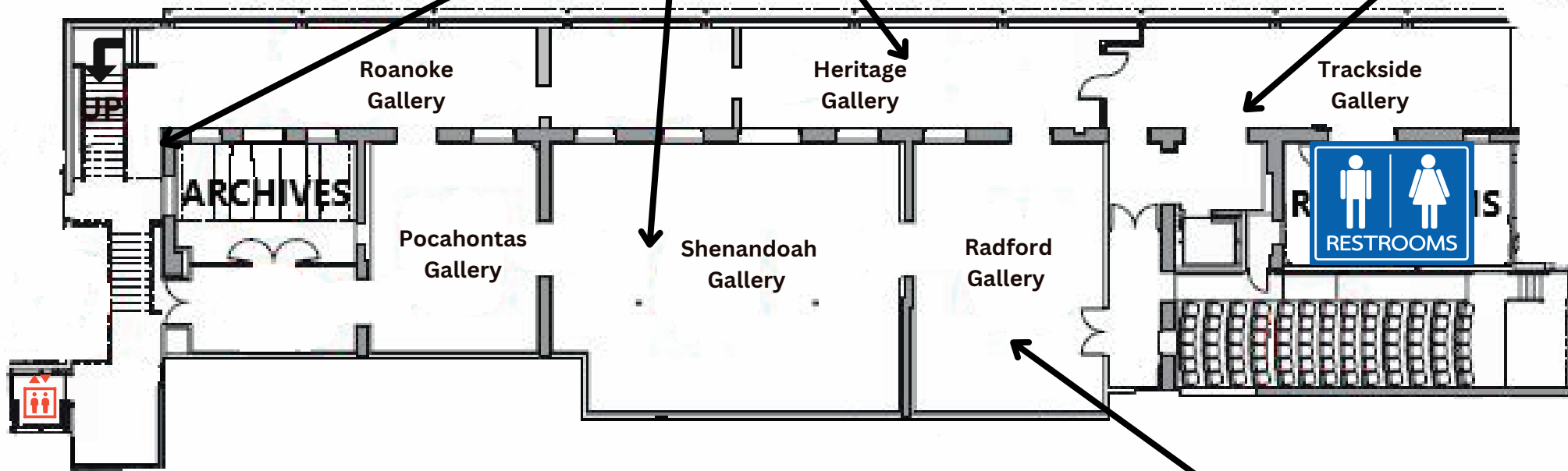
Test your skills and see if you could be a doffer at the Roanoke Cotton Mills.

Discover how to position camera lights to get amazing photographs like Link

Design a beautiful fractur like the region's early German settlers

# A Moment at Crewe: The Lyon Legacy

Combining Captain W.S. Lyon's 1958 photographs of the railroad workers at Crewe, Virginia, and Terry Lyon's artistic representations of his father's photographs, *A Moment at Crewe* captures the end of the steam era for the N&W Railway, as well as of the once thriving railroad industry between Roanoke and Norfolk at Crewe.



## Bespoke: Millinery from the Permanent Collection

Honoring Roanoke resident and History Museum volunteer Sara Airheart for her 95th birthday, this exhibit, located in the **Norfolk Gallery** (upstairs), showcases the ostentatious, demure, and highly fashionable hats that once graced the windows of downtown Roanoke's storefronts. Ranging from the mourning bonnets of the 1870s to the feathered fancies of the 1890s, and from the 1920s cloches to the 1950s fascinators and pillboxes, the myriad of styles, shapes, and materials illustrate that there is a bespoke hat for every occasion.



Pheasant feather hat, Gift of the Revercomb, Deyerle, and Hammond families, 2021.02.006.

## On the Rails



L.S. King, *Twilight at Thurmond* from *Maybe Smith's Imaginarium*, Thurman, West Virginia, May 12, 2023.

Presenting the work of 20 amateur and professional photographers, *On the Rails* showcases contemporary and vintage photographs illustrating the continued influence trains have on the landscape of both Roanoke and America. Ranging from photographs of the Queen of Steam to the modern CSX locomotives, *On the Rails* captures both unique and traditional compositions.